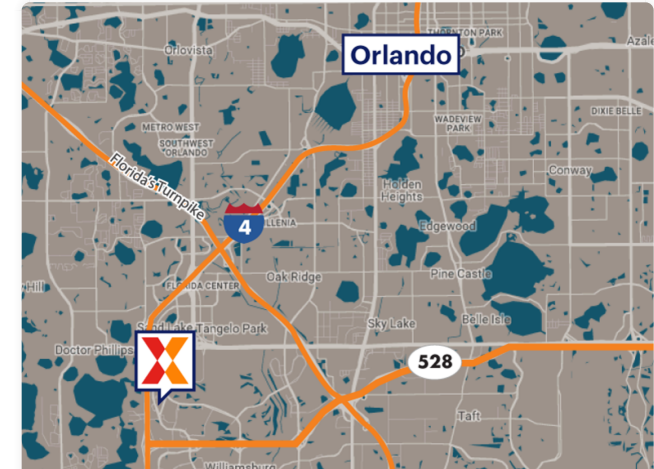
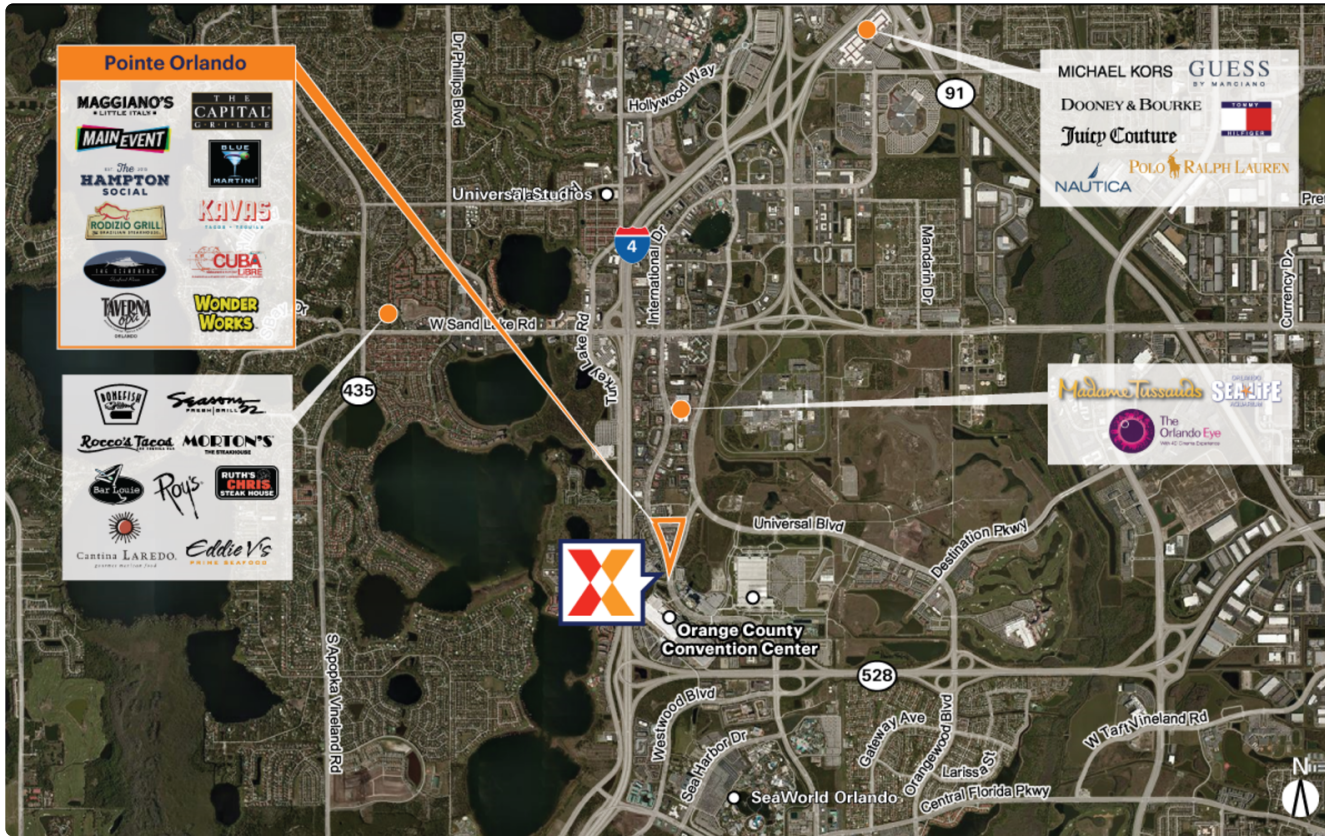


Pointe Orlando

9101 International Drive | Orlando, FL 32819

Orange County Orlando-Kissimmee-Sanford, FL 413,887 Sq Ft

28.4328, -81.4701



Demographics	1 Mile	3 Miles	5 Miles
Population	2,256	51,035	177,796
Daytime Pop.	20,318	153,604	378,463
Households	1,010	20,667	66,666
Income	\$164,537	\$152,789	\$124,708

Source: Synergos Technologies, Inc. 2024

www.pointeorlando.com

\$41M center redevelopment, adding Hampton Social, Kavaz Tacos & Tequila and four Cordish concepts, completed in 2024, plus an additional \$38M redevelopment currently underway with completion scheduled for 2026

Located in the heart of Orlando's tourist district International Drive and only three miles from Universal Studios, two miles from SeaWorld, and seven miles from Walt Disney World

Adjacent to the Orange County Convention Center, the second largest convention facility in the U.S., drawing 1.5M attendees each year (OCCC 2025) and surrounded by 125+ hotels and resorts (I-Drive District 2024)

Home to Live! at The Pointe, opened in 2024, featuring nationally acclaimed venues like Sports & Social and PBR Cowboy Bar, as well as local favorites such as Sal's Pizza, Still Lounge, Shark Bar, and Palm Tree Club

Features a variety of high-volume dining and entertainment concepts, many of which rank among the top six most-visited chain locations nationwide, including The Capital Grille, Maggiano's Little Italy, Rodizio Brazilian Steakhouse, Cuba Libre Restaurant and Rum Bar, and Blue Martini, attracting 3.6M visits annually (Placer.ai 2025)

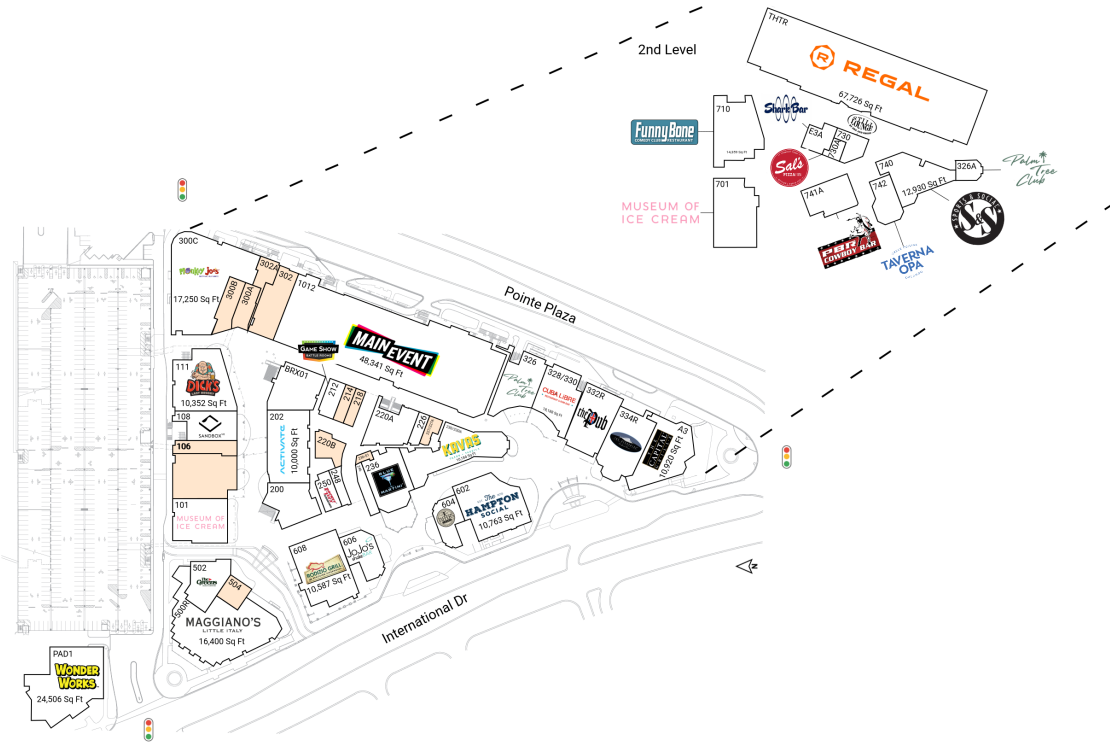


Pointe Orlando

9101 International Drive | Orlando, FL 32819

Orange County Orlando-Kissimmee-Sanford, FL 413,887 Sq Ft

28.4328, -81.4701



Available Spaces

101	4,500 Sq Ft		236-S1	381 Sq Ft	
106	12,854 Sq Ft		300A	2,484 Sq Ft	360°
106	12,893 Sq Ft	360°	300B	2,921 Sq Ft	360°
214	1,180 Sq Ft	360°	302	6,464 Sq Ft	360°
218	500 Sq Ft		302A	1,831 Sq Ft	
220B	2,346 Sq Ft		504	2,084 Sq Ft	360°
227/227A	1,114 Sq Ft	360°			

Current Tenants

Space size listed in square feet

101	Museum of Ice Cream	4,700	334R	The Oceanaire Seafood Room	8,500
108	Sandbox VR	5,275	500R	Maggiano's Little Italy	16,400
111	Dick's Last Resort	10,352	502	The Greens	4,888
200	Zukku San Sushi Bar & Grill	5,484	602	The Hampton Social	10,763
202	Activate Games	10,000	604	Taffer's Tavern	3,561
212	Game Show Battle Rooms	3,417	606	JoJo's Shake Bar	4,471
220A	Will To Escape	5,376	608	Rodizio Grill	10,587
226	Cigars to Go	1,203	701	Museum of Ice Cream	12,999
230/230A	Kavas Taco y Tequila	10,184	710	Funny Bone	14,359
236	Blue Martini	7,205	730	Still Lounge by Dre and Snoop	8,708
246	Moondance Trading	1,145	730A	Sal's Pizza	646
248	Moondance Trading	1,347	740	Sports & Social	12,930
250	Rocket Fizz Soda	1,938	741A	PBR Cowboy Bar	7,737
300C	Monkey Joe's	17,250	742	Taverna Opa	5,500
326	Palm Tree Club	6,395	1012	Main Event Entertainment	48,341
326A	Palm Tree Club	0	A3	The Capital Grille	10,920
328/330	Cuba Libre	18,188	BRX01	Brixmor Regional Office	6,140
30	Restaurant/Rum Bar	0	E3A	Shark Bar	4,041
332R	The Pub	7,975	PAD1	WonderWorks	24,506
			THTR	Regal Cinemas	67,726

This site plan is for illustrative and information purposes only, showing the general layout of the shopping center; and is not a legal survey. Brixmor makes no representation or warranty that the shopping center is exactly as depicted as site conditions and tenant mix are subject to change over time.

